



604.706.1710

Condos & Homes Team

www.bccondosandhomes.com | sales@bccondosandhomes.com



ULLIAC VACATION LOTS



[Click Above Picture For PDF View](#)
[Click Here For Printable View of Above Map](#)
[Click Here For PDF of Anstey Arm Site](#)

Anstey Arm

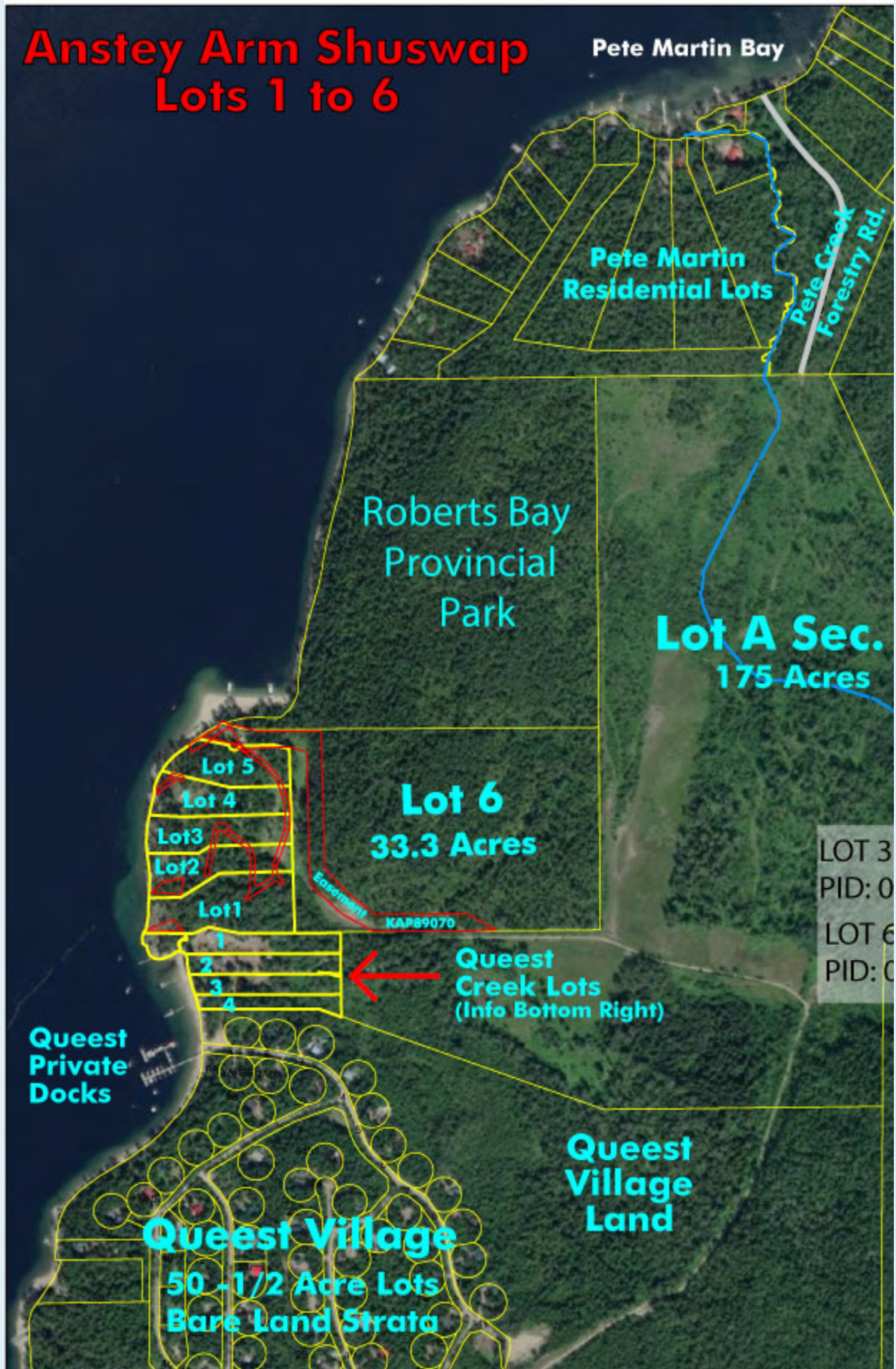
Beachfront in front of Lot 5 & 6





Aerial Drone Fly-By Of Anstey Arm Shuswap, BC

Anstey Arm Shuswap Lots 1 to 6



Click A Feature Sheet or Easement Below To View

[Columbia Shuswap Region District Map](#) (To Get The Lot Info Add The PID in The CSRD Search Section)

LOT 3 (2.48 Acres) MLS #R2673451 PID: 027-933-296 - \$350,000 ([Feature Sheet](#))

LOT 6 (33.33Acres)MLS #R2675654 PID: 027-933-326 - \$650.000 ([Feature Sheet](#))

[Disclosure Statement](#) * [Receipt For Disclosure Statement](#)

2 waterfront Lots left for Sale with boat access only on the east side of Anstey Arm on Shuswap Lake. Property is located North of Queest Village which is a 50 unit Bare Land Strata Community in beautiful Sicamous, BC. All lots are being sold individually by same owner (Six PID's). See location map link below. Rare opportunity to live on spectacular Anstey Arm at an affordable price. Enjoy beautiful sandy beaches of Roberts Bay Provincial Park and Pete Martin Bay. Property next door behind the 6 lots (Lot A) which is 175 Acres may also be for sale – call LB for more details. Access to the lots by boat takes approx. 20-25 mins from Sicamous (Water Taxi approx. \$200). There are easements going thru all 6 Lots, so every lot owner has beach access. Lots 1-4 are on a 20-30 foot cliff and are waterfront, lots 5 and 6 are mostly flat and have direct beach access. Area Listings and Sale Update; there was a recent sale at Queest Creek – Lot 1 which is right below subject property for \$600K and there is a current MLS Listing for \$1.5M (Lot 2) See comparable link below for more info. Both properties are approx. 2A, have log homes on them and have beach access. Queest Village Community which is right below the lots consist of 50 half acre round lots that are registered as Bare Land Strata. All the properties are off the grid and powered by Solar and Propane. Each property can have a septic and well system installed. Call listing broker for more details

Additional Info & Links

| [Search Above Map On Google Maps](#) | [Link to video on Pixilink web site](#) | [Recreational Property Report 2021](#)

| [Comparable Properties for sale on Trovit.Com](#) | [Realtor.ca map – area land Listings in Anstey Arm](#) |

LOCATION, LOCATION, LOCATION

Lots 1-6 are located approximately 21 km from Sicamous, accessed by water – 25 minutes by water taxi from Sicamous.

This is a chance to enjoy the benefits and privacy of owning a waterfront property with access to all of the recreational Shuswap Lake has to offer.

Sicamous is on the TransCanada Highway one on the eastern side of Shuswap Lake between Salmon Arm and Revelstoke. It is about a 5 Hour Drive from both Calgary

Alberta or Vancouver BC.

Click A Picture Below For Larger View



Lot 5 & 6 Looking From Water



Lot 5 & 6 Looking Towards The Water



Sandy Beach In Front of Lot 5



Lot 5 & 6 Beach



Lots 6,5,4,3,2 & 1



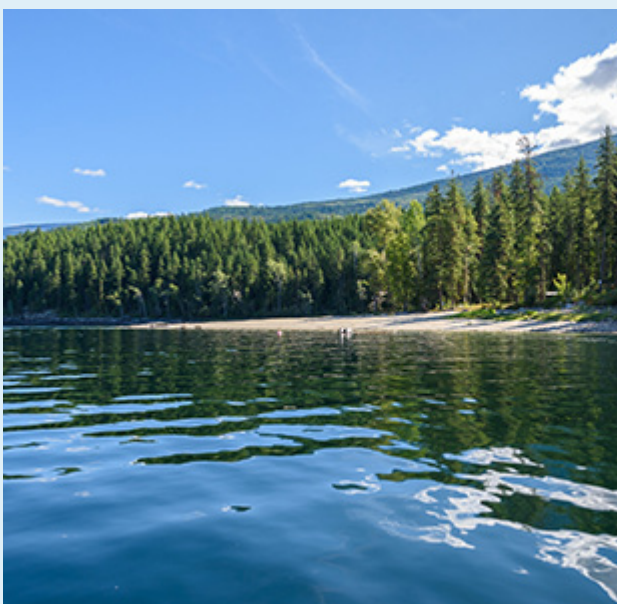
Beach Lot 6, 5, 4,3,2 & 1



Beach Lots 6, 5 & 4



Lot 4 & 3



Lot 5 & 6 Beach

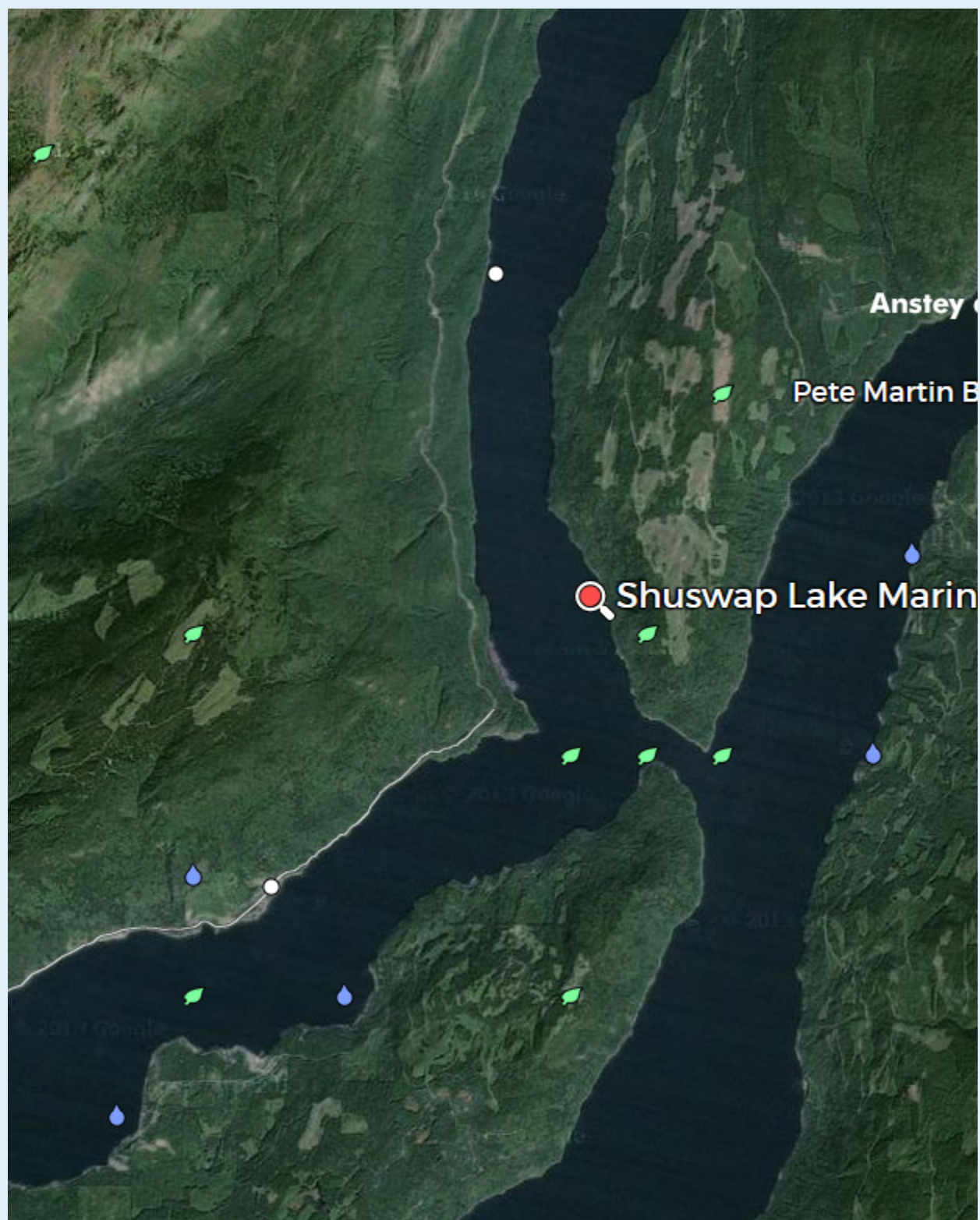
Beach At Lot 5 & 6

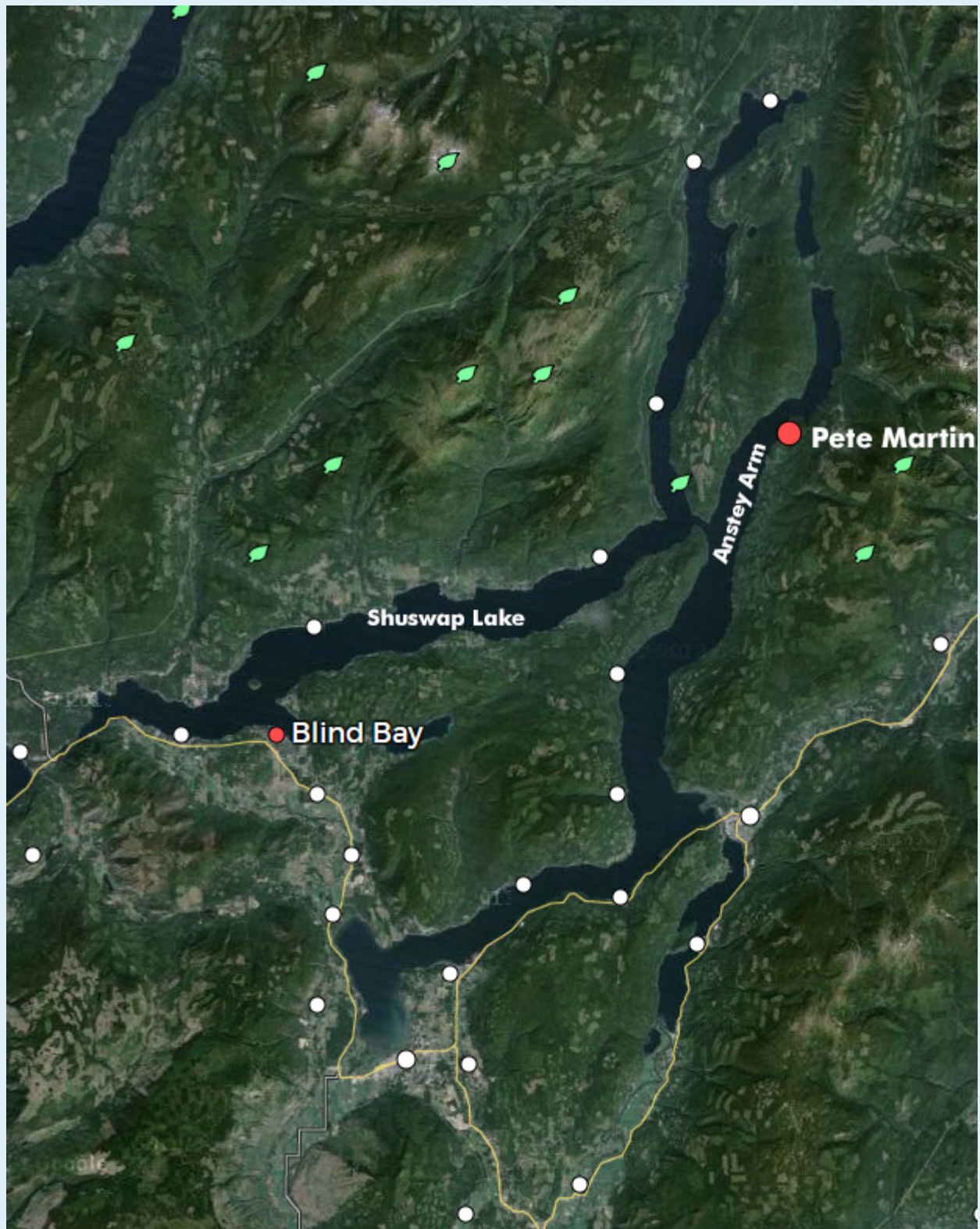
Property Overview

When looking to purchase a property one should be able to enjoy all activities that you and your family members participate in. Very rarely are properties on the market that offers this as well as being able to relive the exciting homesteader days of the past century.

At Rainbow's End enjoy access to beautiful sandy beaches, one at the Robert's Bay Provincial Park and the other in the Pete Martin Bay. (See attached map in this feature sheet) Where else can one enjoy quad biking, cycling, hiking, water activities and being located minutes from Queest Mountain which is recognized as the best snowmobiling destination in Western Canada? Your year around recreation activities are at your door step.

At the end of rainbow it is to be believed there is a pot of gold and At Rainbow's End on the Shuswap Lake it couldn't be a truer statement. There are endless opportunities available to the future owner of this spectacular piece of Shuswap real estate.





Discover Shuswap Lake



Service Road Behind Lots



Drone Picture of the 5 lots



Anstey Arm



Floating Store



Floating Store



Floating Store



Floating Store



Shark Shack



Drone Picture of Beach Lots 3, 4, 5 & 6



Drone Picture of Lots and Roberts Bay Provincial Park



Drone Photo of Lots and Lake



Drone Photo of Lake Lots Below



Between Lot 6 and Lot 5



Beach - Lot 5 & 6



Sandy Beach & Shore Line In Front Of Lots 5, 4 & 3



Shore Line In Front Of Lots 5, 4, 3, 2 & 1



Shuswap Lake - Anstey Arm Lots and Park



Anstey Arm And Sandy Beach



Sandy Beach By Lot 5

Sandy Beach & Shoreline

Recreation

Gateway to Shuswap offers superb snowmobiling in the winter. Groomed trails on the four local mountains feature sledding for everyone from the novice to the extreme rider. The deep powder snow extends to sledding season well into spring. Skiers will find the nearest slopes at Silverstar Mountain Resort northeast of Vernon, Apex mountain resort west of Penticton, Big White Ski Resort 54 KM southwest of Kelowna and Sun Peak's Ski Resort at Todd Mountain north of Kamloops.

In the spring summer and fall enjoy the relaxation of touring boating, lake cruising on the historical Phoebe Ann Paddle Wheeler and fishing in the warm pristine lakes. For those who want to play, there is every imaginable water toy available and many amenities available at Finlayson and Beach parks. Hike the many walking and hiking trails leading to waterfalls cascading over large boulders and experience the sounds of nature while strolling through the forest.

Other area recreation include golfing fishing swimming parasailing wine touring and the commercial waterslides.

Area data for Sicamous

Population approximately 3,166

Elevation approximately 1,139 feet

Sicamous is the houseboat capital of Canada where you could snowmobile golf and houseboat all in the same weekend in the month of May. You will easily find Sicamous when you are traveling east west or north at the junction of Highway 1 and Highway 97A. The community is situated on Mara and Shuswap Lakes which are connected by a channel that is alive with activity and quite accessible.

Shuswap Lake Provincial Marine Park

Shuswap Lake Provincial Marine Park is one of the most popular boating and canoeing locations in the southern interior of BC. One of the best places to begin exploring Shuswap Lake is Sicamous, which is the main center serving Shuswap Lake. There are more than 300 houseboats that are rented out annually from the marinas on Shuswap Lake. Shuswap lake is made up of four large arms; the Shuswap Lake Maine Arm, Salmon Arm and Anstey Arm and Seymour Arm.



View



Shoreline



Shoreline



Shoreline



Boating



Boating



Tangled Forest



Forest



View Through The Trees



View From The Trees



View



View



View



Water View

[Disclosure Statement](#) * [Receipt For Disclosure Statement](#)

For More Info, contact the Listing Agent;
Les Twarog * 604-671-7000 * support@6717000.com * www.lestwarog.com